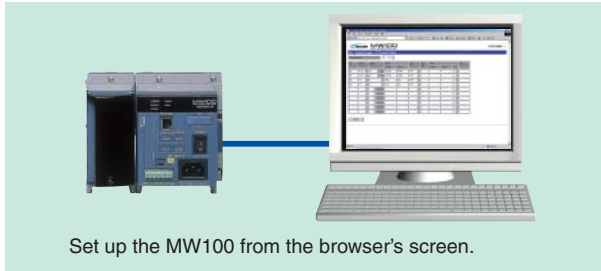


This is the basic flow for acquiring measured data. Settings (excluding some communications settings) and real time monitoring of measured data can be performed using a browser (Internet Explorer 5.5 and 6).

Setup



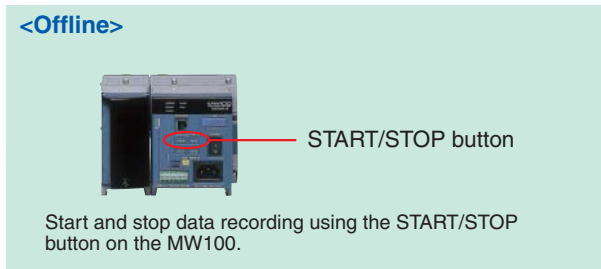
Set up the MW100 from the browser's screen.



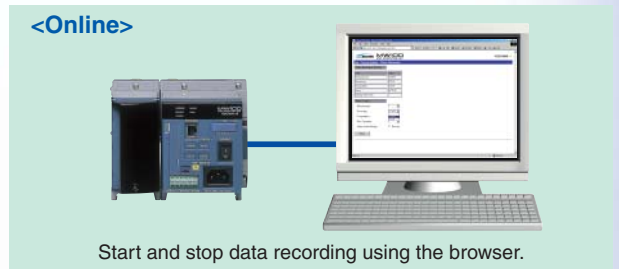
Settings can be saved and loaded on the main unit. If desired, you can copy the settings from one MW100 onto another via the CF card.

Data Acquisition

Start/Stop Data Recording Measured data is recorded to the CF card in the MW100. Starting and stopping of the record operation can be controlled either online or offline.

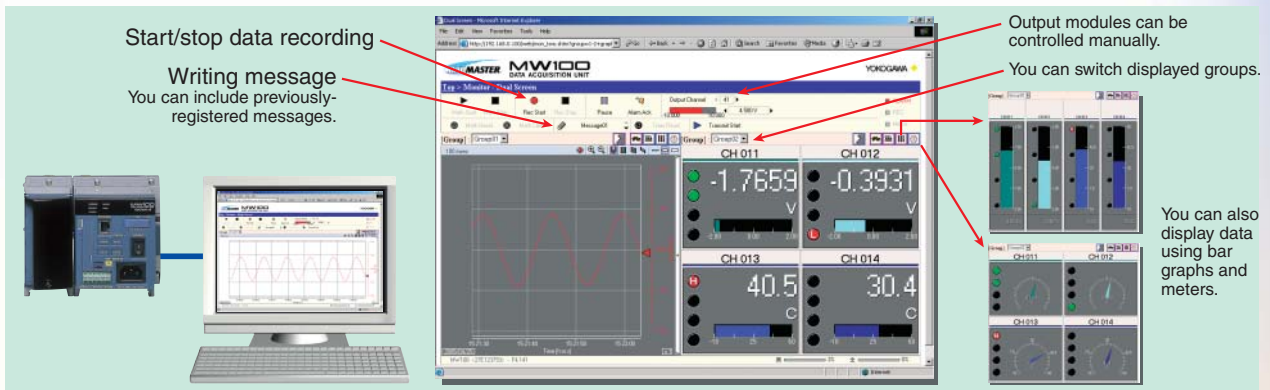


Start and stop data recording using the START/STOP button on the MW100.

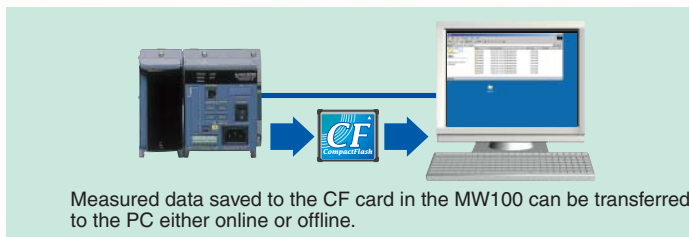


Start and stop data recording using the browser.

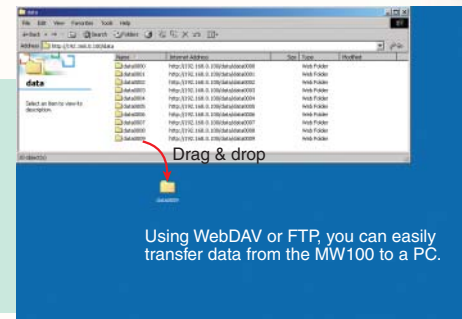
Realtime Monitoring You can use a browser for realtime monitoring of measured data. While monitoring, you can also control starting and stopping of the record operation from the browser screen.



Data Transfer



Measured data saved to the CF card in the MW100 can be transferred to the PC either online or offline.



Data Analysis

Measured data can be displayed using the Viewer Software (comes standard), enabling waveform display, digital display, or interval arithmetic. Data can be converted to Excel, Lotus, or ASCII format.

